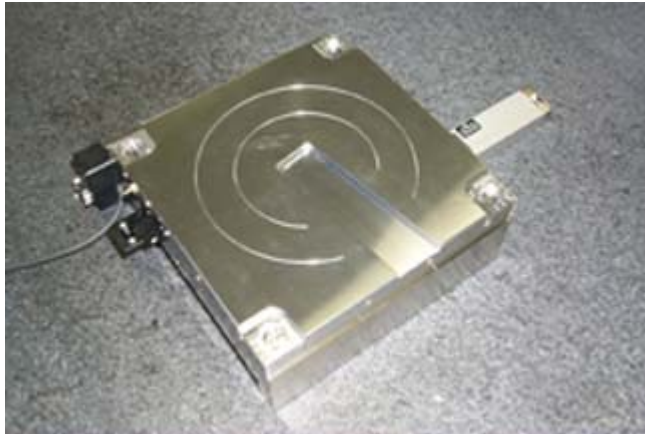




Model RS-W200/150 Reference Stage

Unprecedented Flatness of Motion



RS-W200/150 Reference Stage

FEATURES:

- 1 cm travel, single axis
- 100 nm lateral positioning resolution
- Extremely Flat motion, < 10 nm total deviation from flat over 10 mm
- Translation speed 1 mm/sec max : 3um/sec min
- True bi-directional, no performance variation forward/reverse
- Minimal start-up jump, typically performs to spec within 3 microns of start-up
- Noise of motion less than 1 nm RMS typically 0.4nm (only measurable with an Atomic Force Microscope)
- May be configured for a variety of applications: wafer, disk, optical element etc.
- VB user interface available or dll for user program control
- Custom mounting available
- X-Y plane centered payload 2 kg

The RS-W200/150 Reference Stage truly represents the state-of-the-art in linear translation with minimal vertical deviation. The RS-W200/150 achieves far flatter motion than any commercially available stage of any type. The RS-W200/150 even substantially outperforms modern profilometer stages for flatness while achieving much faster, true bi-directional scanning.

Using a proprietary, patented sliding mechanism, the RS-W200/150 Reference Stage opens a range of applications not previously possible with existing technology. Users can re-think the need for vertical position feedback or focus control for devices ranging from lithography tools to interference microscopes to electron or ion beam systems.

The RS-W200/150 Reference Stage is currently available for custom OEM applications only. It is the lowest out-of-plane translator available.

PLEASE CONTACT US FOR PRICING AND CUSTOM APPLICATION INFORMATION;

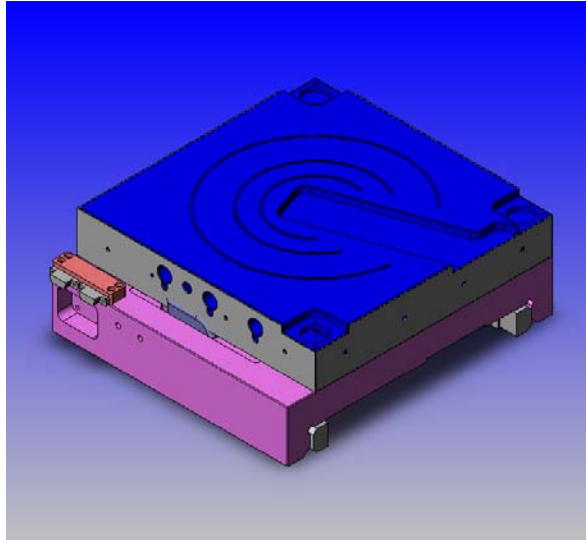
INVENIOS, INC.
35 SOUTH LA PATERA LANE
SUITE C
GOLETA, CA 93117
(805) 681-9500 (TEL)
(805) 681-9534 (FAX)

WWW.INVENIOS.COM

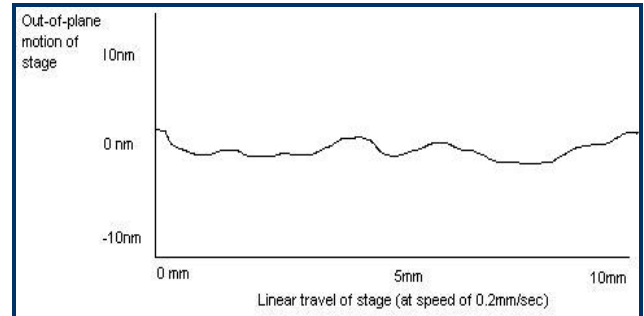


Model RS-W200/150 Reference Stage

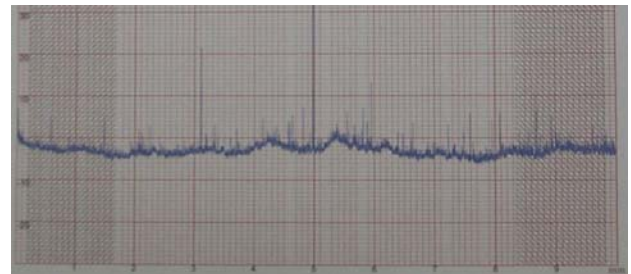
Unprecedented Flatness of Motion



View Showing Integrated Union-Tool Rails



Graphical Data showing a 10mm scan



Length of Scan (mm)
Data Showing 10mm Scan (Vertical Axis Large Grid 10nm).
Note: The spikes are particulate on the sample.

INVENIOS, INC.
35 SOUTH LA PATERA LANE
SUITE C
GOLETA, CA 93117
(805) 681-9500 (TEL)
(805) 681-9534 (FAX)

WWW.INVENIOS.COM